



# THE PEOPLE'S FIGHT AGAINST SICKLE CELL ANEMIA BEGINS



Sickle cell anemia - 98% of whose victims are Black - is a disease which is inherited through the genes (The central power or "cell brain" of every living cell. These "cell brains" directly affect and determine physical characteristics and traits in a person's body.). Because the disease is contracted at birth, its agonizing symptoms and pain begin in early childhood. Yet, most Black people are unaware of the existence of such a disease.

Most hospitals do not have clinic facilities for automatic screening of patients for sickle cell anemia or its traits. Such a test must usually be requested by a doctor before it is given. Because of the lack of public information on this subject, and because of the general lack of care or concern shown for Black people in racist, genocidal hospitals, the majority of Black people have remained unaware of the existence of sickle cell anemia and its deadly effects. The Black Panther Party presented its findings to the people in the April 10th, 1971, issue of our Paper, in an article entitled, "Black Genocide - Sickle Cell Anemia", in order to inform the people about the existence of this disease and alert our people to its dangers.

Knowing that this was not enough, the Black Panther Party is beginning testing of people for sickle cell anemia and/or the sickle cell trait, through our People's Free Health Centers in our various chapters and branches throughout the U.S. The Illinois Chapter of the Black Panther Party initiated this step by administering blood tests on May 12, 1971, at the William Penn Elementary School in Chicago, which has fifteen hundred pupils, all of whom are Black. The tests were conducted by the doctors, nurses, technicians and trained community people from the Spurgeon "Jake" Winters People's Free Health Center. Each day of the testing over 200 children were tested.

The program was proposed to the parents of the students at the school by Deputy Minister of Health of the Illinois Chapter, Ronald "Doc" Satchel. The parents unanimously approved the

program and were very happy that something was being done to safeguard the health and well-being of their children. The principal of the school even welcomed the program, saying that it was needed. Dr. Eric Kast, an Assistant Professor of Medicine and Psychiatry at the Chicago School of Medicine, said that this was the first known program of its kind in the country.

Every Black person should, in fact, have this test, because sickle cell anemia is an hereditary disease. Even though a person may not have the disease itself, he may be a carrier of the sickle cell trait. And, carriers of the sickle cell trait, who do not suffer the actual symptoms of sickle cell anemia, can, however, unknowingly transmit the disease to their offspring, children. (If both parents have the trait, there is a 25% chance that their child will have sickle cell anemia.) Dr. Richard A. Goldsby, a Black geneticist (a doctor who studies family traits) of Yale University has charged that U.S. public health agencies have neglected their obligation to the People by not requiring such tests, particularly of Black people who are about to get married, since most States require a blood test be taken anyway in order to get a marriage license.

Sickle cell anemia is a crippling, painful disease that kills most of its victims before they are thirty. In some cases, permanent paralysis results from sickle cell anemia. And, a Black ophthalmologist (eye doctor) in New York says that he has found that the sickling trait may bring about serious eye disorders that could result in blindness. He also said that the trait could cause serious complications in other eye disorders, merely by its presence.

Sickle cell anemia is as crippling, as painful, and as deadly as leukemia, muscular dystrophy or cystic fibrosis, all of which diseases primarily affect white people. Yet sickle cell anemia has not received the attention or consideration from public agencies that these diseases have. This is a clear indication of the racist and genocidal policies of this

government. In 1967, for example, Dr. Robert Scott of the Medical College of Virginia Health Sciences Center estimated that there would be for that year 1,555 new cases of sickle cell anemia, and only 1,206 cases of cystic fibrosis, and 813, of muscular dystrophy. Yet, the very next year, 1968, \$7.9 million was raised to study muscular dystrophy and its causes; \$1.9 million, for cystic fibrosis; and, for sickle cell anemia, a mere hundred thousand dollars.

Past statistics have indicated that one out of every four hundred Black people has sickle cell anemia and over two million have the trait. However, since there has never been testing for the trait or the disease on a mass scale, these figures must be considered highly inaccurate. In our tests in Chicago in a three-day testing period (May 12th through May 14th) approximately 600 children were tested. Twenty-seven of these children had the sickle cell trait; and further tests are being made to determine how many of the twenty-seven children actually have sickle cell anemia. This test alone indicates more than double the percentage of the guesswork statistics.

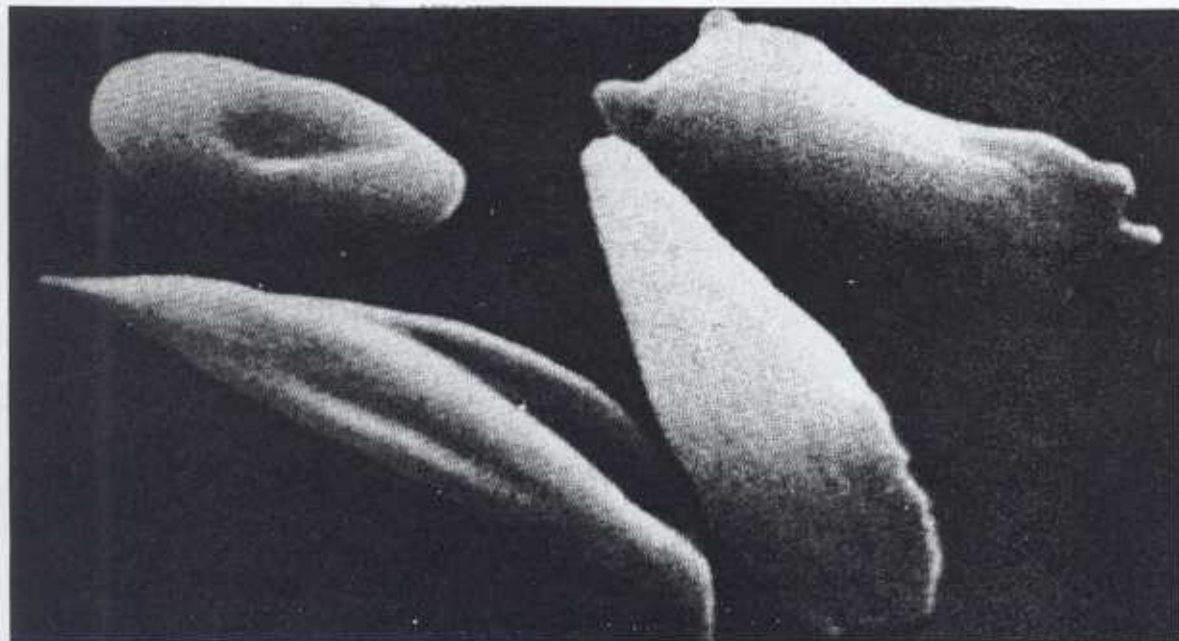
Although virtually nothing seems to be known about sickle cell anemia, very little has been done to find its cause or its cure. It is clear that this racist government has no intention of ceasing this genocide. Research on sickle cell anemia would hinder their plan of Genocide upon Black people. In order to ourselves insure our survival, the survival of Black people, the Black Panther Party has implemented this program to test people for sickle cell anemia, as well as put out as much information and literature as possible to educate the people to this. In addition, the Black Panther Party has also started a People's Sickle Cell Anemia Foundation in order to begin research that is truly in the interest of the people, for a cure of this deadly disease.

Join in the fight against this form of Black Genocide - Sickle Cell Anemia.

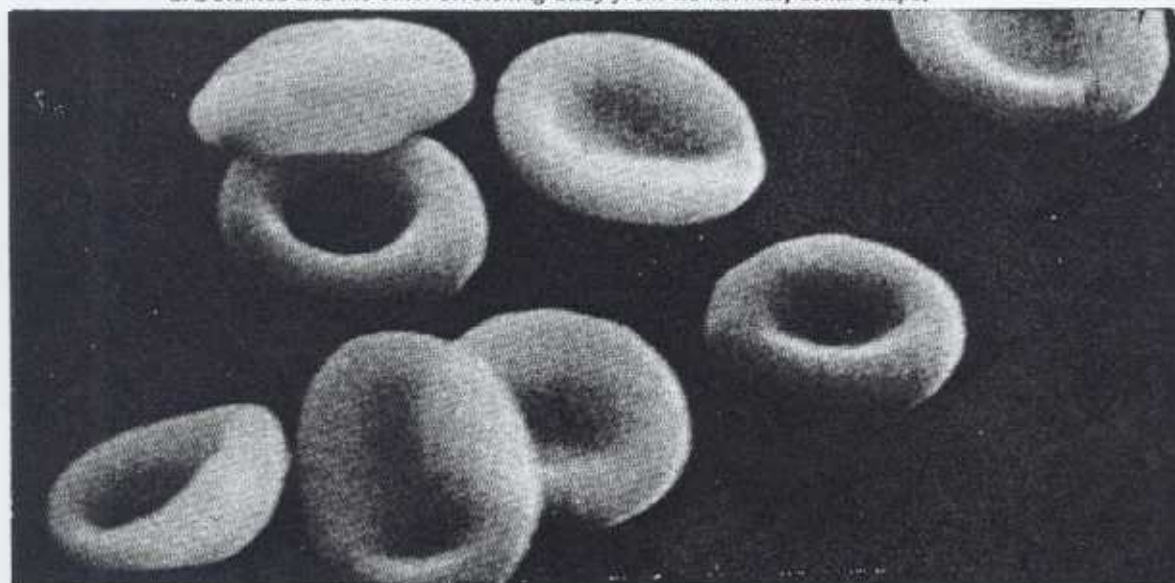
ALL POWER TO THE PEOPLE



*Youth At William Penn School, Awaiting Their Turns  
For Sickle Cell Anemia Tests*



*Red blood cells taken from a patient in a sickle cell crisis. Three of the cells  
are sickled and the other stretching away from its normal, donut shape.*



*Normal, donut shaped, red blood cells.*



BOSTON. MA.

# FUNDS FOR SENIOR SAFETY



*S.A.F.E. is serving our formerly neglected senior citizens.*

Bobby Seale and Elaine Brown are both very active in their communities. Their record of service to the people is outstanding. They have provided strong leadership and have been instrumental in the implementation of many people's programs.

During the campaign, Bobby and Elaine are continuing to help implement new programs and plan new ways to solve the problems in the city. The implementation of these plans largely hinge upon the availability of funds to operate the programs. Once elected to office, Bobby and Elaine will channel funds that have been misused in the past into programs which will employ more people. With the establishment of a preventative health care program, new jobs will also be established. When business and construction companies are contracted by the city of Oakland, it should be required that 50% of the people hired actually be unemployed residents of Oakland.

Tax dollars and poverty program funds previously channeled into meaningless, unproductive programs and into administrator's pockets, will be used by the new Mayor and City Councilwoman to begin to bring an end to our problems.

In an effort to have government money put to real use, Bobby and Elaine are seeking to have the SAFE Program (Seniors Against a Fearful Environment) funded by the Oakland Model Cities Agency. SAFE is a senior citizens program which provides transportation and protection against muggings so that they can cash their monthly checks. Current Model Cities programs for senior citizens are not providing this kind of protection. The Model Cities police intern programs that are supposedly designed to stop muggings and other street crimes do nothing more than establish a force of community informants. In addition to this waste of money, the City council allotted \$55,000 for a helicopter to patrol the sky while senior citizens are mugged on the ground. SAFE is a practical step toward stopping muggings and protecting and serving some of our most neglected citizens.

On January 3, the SAFE Program again provided transport service to the elderly at the Satellite Senior Homes. Elaine Brown announced to newsmen that a formal request will be made for funding, and she ex-

plained the importance of the program:

*"We're asking for a very small amount, at this time we would like to put a program into operation that would become a million-dollar a year operation. In other words, seniors could have a larger center, a recreation center equipped with radio vans and all of the necessary equipment. At this point, we would like just a few vans so we could give people driver training. We could start with about five vans and really do a very good job and have a strong program. Not only will we drive senior citizens to the places where they cash their checks, we will take them other places also. Social Security checks aren't enough for a human being to live on, especially when, because you're older, you have to spend more money for health care. Their needs are increased and their income is decreased. There will be a lot of services, but the primary service right now is to provide a modicum of safety for people that really have no defense against a person that would take their money."*

Programs like SAFE can serve larger numbers of people and provide more services if funds are channeled into them. On April 17th we will elect Bobby Seale and Elaine Brown, so that our tax monies can no longer be misused.

**ALL POWER TO THE PEOPLE**



*S.A.F.E. is a program which provides transportation and protection for senior citizens cashing their monthly checks.*

THE BLACK PANTHER PARTY'S  
**FREE BUSING TO PRISONS PROGRAM**  
WILL BE TAKING FRIENDS AND RELATIVES TO VISIT  
PRISONERS AT THE FOLLOWING PRISONS:



ALL BUSES WILL BE DEPARTING FROM ALLEN TEMPLE CHURCH,  
LOCATED AT 85th AVENUE AND "A" STREET IN EAST OAKLAND  
(ONE BLOCK OFF OF EAST 14th STREET).  
FREE CHILD CARE AND FREE LUNCHES WILL BE PROVIDED.  
IF YOU ARE INTERESTED IN PARTICIPATING, PLEASE CALL  
532-6566 AND LEAVE YOUR NAME, ADDRESS AND TELEPHONE  
NUMBER?

*Sunday, October 29, 1972*

SAN QUENTIN

Departing time is 8:00am  
Returning to Oakland at 1:00pm

SANTA RITA

Departing time is 10:00am  
Returning to Oakland at 3:30pm

*Saturday, November 4, 1972*

FOLSOM AND VACAVILLE

Departing time for both trips is 7:30am  
Returning time for both trips is 5:30pm

*Saturday, November 11, 1972*

TRACY AND SOLEDAD

Departing time for both buses is 7:00am  
Returning time for both buses is 5:00pm

---